

12 v Boating , Caravan
and Camping Applications

Ultra-light
Flexible
Thin
Aesthetics

5 YEAR
Warranty

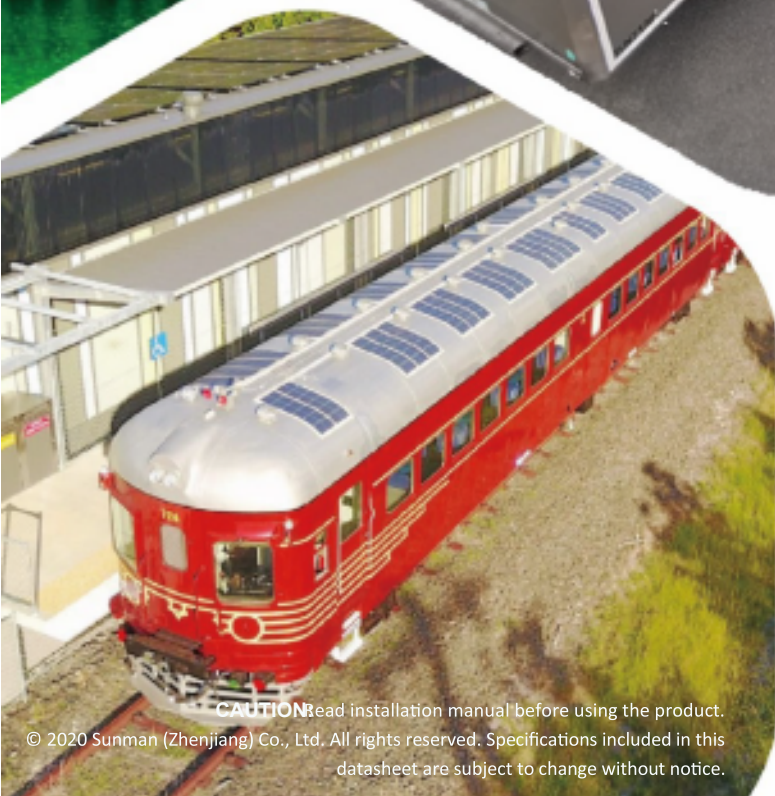
Electrical

STC	SMF185M-4X09UW	SMF100S-4X9UW	SMF90S-4X8UW
Maximum Power (P _{max})	185	100	90
Maximum Power Voltage (V _{mp})	19.9	18.9	16.7
Maximum Power Current (I _{mp})	9.30	5.29	5.38
Opencircuit Voltage (V _{oc})	24.1	22.5	21.1
Shortcircuit Current (I _{sc})	9.78	5.75	5.64
Module Efficiency (%)	17.4	15.0	15.1
Operating Temperature (°C)	-40 °C to 85 °C		
Maximum System Voltage	1000 V DC (IEC)		
Maximum Series Fuse Rating	20 A		
Application Class	Class A		
Power Tolerance	0/+5 W		

STC: Irradiance 1000W/m², Cell temperature 25°C, AM=1.5.

Mechanical Characteristics

Product	SMF185M-4X09UW	SMF100S-4X9UW	SMF90S-4X8UW
Solar Cell	Mono (6 inches)	Mono (5 inches)	Mono (5 inches)
No. of Cells	36 (4×09)	36 (4×09)	32 (4×08)
Module Dimensions	1520×700×2 mm	1219×546×2 mm	1092×546×2 mm
Weight	3.5 kgs	1.9 kgs	1.7 kgs
Backsheet	White		
Jbox	IP 68 rated (each j-box have one bypass diodes)		
Output Cables	Photovoltaic technology cable 4.0 mm ² , (+)150 / (-)450 mm		
Connector	MC4 compatible		



CAUTION Read installation manual before using the product.

© 2020 Sunman (Zhenjiang) Co., Ltd. All rights reserved. Specifications included in this datasheet are subject to change without notice.